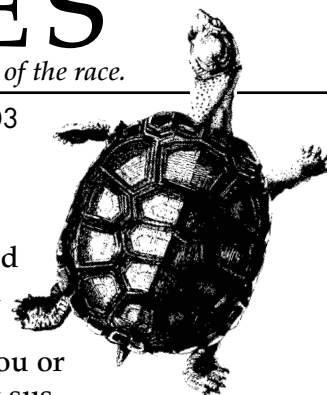


TURTLE TIMES

Choosing the slow lane, living close to the earth, heading for sustainability at the end of the race.

Volume 5, Number 4

Winter 2003



UPCOMING COURSES

Intro meeting/NWEI courses

■ Tues. January 21, Noon, Idaho Conservation League \$10 fee for non members. Contact: Rachel Winer rwiner@wildidaho.org

Voluntary Simplicity

■ Wed. Jan. 22, 7pm Boise High Boise Schools Community Ed Advance registration required, small reg. fee call after Jan. 6, 424-3215

Exploring Deep Ecology

■ Intro meeting in Jan. to start EDE courses. Contact: Dan Walters 424-0409 (h) dwalters@forsgren.com or dcwalter@velocitus.net

■ Downtown YMCA, Mon. 1pm. Starting in Jan. Contact: Alice Whitford 343-9812

Choices for Sustainable Living

■ Fri. eve., Meridian. starting in Jan. Contact: Ryndy Williams 288-1901 ryndyw1456@aol.com

Ketchum NWEI Courses

■ Environmental Resource Center offers NWEI courses. Contact: Jeanne Liston jeanne@ercsv.org

Weiser/McCall NWEI Courses

■ Courses in Jan. Contact: Anne Hausrath: 345-9631 ahausrath@juno.com

To start a course in your neighborhood, workplace, or place of worship, contact: Anne Hausrath 345-9631.

To be notified via e-mail of upcoming courses, contact ahausrath@juno.com

Spread Good News

Each edition, we'd like to spread good news about local events or ideas which embody NWEI ideals and *real life examples of sustainable living!* Are you or someone you know in Idaho practicing sustainability? In your home, your yard, your neighborhood, your business, your mode of transportation? Contact: Anne Hausrath 345-9631, ahausrath@juno.com ■

Many Thanks to Lyn McCollum!

After three years as NWEI Idaho staff member, Lyn has stepped down. During her time as staff, Lyn donated countless hours of her time, providing gracious leadership and tireless dedication. Among other things she edited Turtle Times, coordinated the annual Native Plant Sale and Yard Sale, recruited and trained volunteers, managed the data base, did significant fundraising, and introduced and mentored numerous courses. Luckily, Lyn has agreed to stay on as volunteer coordinator of this year's Earth Day Native Plant Sale and she will continue to mentor courses. Thanks Lyn! ■

Calculating the Cost of Christmas

By Aaron Moiso

It was nearing Christmas when I gave my 6th grade students this homework assignment. It was the consequence of many discussions I had been hearing about everything my students hoped to get for Christmas, and Thanksgiving break had just ended. The students began to use the morning sharing time to discuss their Christmas lists. By the middle of the second week, some of the kids already knew what they were going to get. "I heard my mom talking on the phone, and she said that I was getting a Playstation," one would say. Another put in, "I saw one of my gifts in the closet!"

Not too long after that, the kids quit talking about what they were getting, and instead, focused on the number of presents that would be under their tree, the grandparents' tree, the step-dad's tree, the step-mom's tree and so on. In response to my questioning one day, a student answered, "Well it doesn't really matter what I get, as long as my brother doesn't get more than me."

I had had enough. It bothered me that, though my students live in a country where one out of ten children experiences hunger and in a school district where many students obviously could not afford the correct-fitting clothes, my students were spending every free moment trying to calculate the physical and monetary quantity of everything they might receive for Christmas to ensure that it was more than a bother, sister, neighbor, or friend might receive.

I figured that as long as they were calculating, they might as well figure out how much time it would take to purchase their gifts. More specifically, how long it would take the workers who were piecing together their would-be gifts to purchase the items my students wanted. So I assigned homework. I told my students that they were to go home and check the ads in the newspaper, visit a toy store, or call their favorite shopping area and come back to school with a list of three gifts. These three gifts were to be the top three on their list that they thought they might actually be given for Christmas. With each gift, they were to list the retail price, and then total the prices at the bottom of the page. When they arrived in school the following day, every student had the assignment completed (a rare occurrence), and they were ready to share what they had compiled.

On the board, I wrote the hourly wage of factory workers from four different third world countries. These wages were derived from several different websites* concerned about world poverty. I explained to the students that these people normally didn't get to work the short eight-hour days that are experienced by many workers in the United States. In addition, I let my students know that many people in the US only have to work five days a week, but that was not always true for the people we were investigating. At that point I said, "Let's assume that each of these people works ten hours every day of every week. Let's also assume that these people have zero expenses, so they don't actually buy food, pay for clothes, have a car, rent a home, pay for clean water, heat, electricity, a doctor, school supplies, a toothbrush, or even toilet paper. How long will it take for each of these four people to buy the top three gifts on your Christmas list?"

Students pulled out their calculators and began crunching numbers. There was a period of silence, and then, there were cries of panic and some uncomfortable giggles. "I think I got the wrong answer," one would say. "This can't be right," said another. But they were right. Their calculations were flawless. To emphasize the point even more, I had my students construct bar graphs that compared the wages and results of all four countries. My students found themselves with gifts on their lists that would take people in other countries between ten months and ten years of constant ten hour days and zero living expenses to purchase.

Some of my students were angry. They suggested I made them do the assignment just to make them feel badly. In

Continued on page 4



UPCOMING EVENTS

J A N U A R Y

Contra Dance: Fri. Jan. 10, 7:30pm - 9:30pm, Lowell School. Beginners of all ages welcome (children age 5 and up catch on quickly w/adult partner). Co-sponsored by NWEI with North End Neighborhood Association and Hyde Park Mennonite Fellowship. (Musicians wanted! Contact: Anne Hausrath 345-9631 ahausrath@juno.com)

Snow Shoe Trip: January 25 Saturday. Join us for a day snowshoe outing in the Boise National Forest. The location will depend upon snow conditions, but will be no further than a two hour drive from Boise. Bring a lunch and your usual outdoor clothing. Contact leader Alan Hausrath for details about where and when to meet. 345-9631 or arhausrath@juno.com

"Sing the World A Brand New Song": January 24 - 25, Celebration of Martin Luther King Jr., Teaching Peace Workshop, and concert with award winning singer Red Grammer. Sponsored by Boise Family YMCA and Open Door Studio. Contact: Jayne Sorrels at 890-5613. For information on Red Grammer: www.redgrammer.com

M A R C H

NWEI Volunteer Retreat: 9:30am to 4pm. on a Sat. in March (exact date to be determined). We invite volunteers to join us for a day of creativity and possibility! This is an opportunity to express the values that attract us to NWEI, explore ideas for more varied and enriching programs, and participate in an empowering vision of service to our community and to the earth. We intend to make this a fun event, resounding with good company, insightful experiences, and hearty food. You may enjoy yourself so much that you'll consider joining us on the Steering Committee! Or you may wish to deepen your involvement in NWEI by mentoring classes, helping with fundraising, writing for the newsletter, or numerous other creative outlets for expressing your gifts. If you are interested in attending this special gathering, contact Mike Phillely 378-1714 mphillely@cableone.net

A P R I L

Native Plant Sale: Annually on Earth Day - Sat. April 26. To donate plants or to help w/ sale contact: Lyn McCollum 345-6709, lyn@mccollums.net

Wanted: A Few Good People

Do you like talking about NWEI courses? Get satisfaction from connecting other people to a good thing? Like learning from new situations and meeting new people?

This is just a little of what NWEI volunteers get from serving as *mentors* and *presenters*. A *presenter* addresses a group that have shown an interest in a course and want to know more. The *presenter* gives an overview of the course and an introduction to the mission of NWEI. Useful skills for this position include: comfort with speaking to groups, a degree of passion and enthusiasm, organization, humor, flexibility, willingness to risk, and genuine desire to share.

A *mentor* joins a discussion group at its first meeting. The *mentor* models the course process by giving an opening and facilitating the discussion for the first chapter's reading. Maintaining contact with the group through the group coordinator, the *mentor* can also help troubleshoot problems. The *mentor* returns to the group's final celebration meeting to facilitate closure and to propel the group into possible directions for future activity. Useful skills for *mentors* include: comfort with meeting new people, familiarity with a facilitation role, organization, ability to follow through, listening skills, humor and flexibility.

Both opportunities assume that you've taken at least one NWEI discussion course. So, if any of this fits you, or you want to try it on for size, well, take a chance! Contact Anne Hausrath and express your interest. Watch the fun quotient in your life increase. Training for mentors and presenters will be held in the spring. And remember NWEI promotes simplicity, so level of involvement, how much or how little, is up to you.

Boise Public Library Hosts Classes

We will be offering NWEI courses at the library as soon as we find local businesses willing to underwrite the cost of a course set of books. If your business would like to partner with NWEI to help provide nwei courses, contact Anne Hausrath 345-9631, ahausrath@juno.com

Let's Get Together

Have a good idea and looking for people to join you?

Sustainable Idaho

(an offshoot of NWEI), invites anyone interested in creating an ethic of sustainability in Idaho to join us. Contact: Dan Walters 424-0409, dwalters@forsgren.com or dcwalter@velocitus.net

Conscious Eating Inspired by the chapter on Food in Choices for Sustainable Living. Join us to share a "Conscious Meal" once a week, Wed. at 1:30pm. Contact: Alice Whitford 343-9812

Eco-Party Gather to explore ways to reduce waste and toxics, and save energy and water in our homes. Contact: Kim Ham 712-1534, kaphagirl@hotmail.com

Looking for new friends, fun events, and a good cause?

Join NWEI!

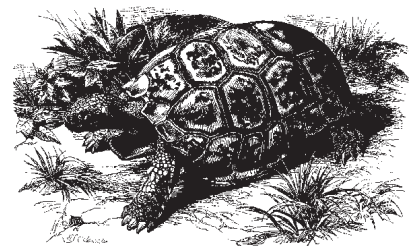
- ___ \$30 Member (8¢/day!)
- ___ \$50 Contributor
- ___ \$100 Earth Steward
- ___ \$250 Sustainer
- ___ \$500 Patron
- ___ Yes, I'd like to volunteer

Make tax deductible checks payable to "NWEI" and mail to: NWEI 1810 W. State St. PMB #209 Boise, ID 83702

THANK YOU!

Members who have joined or renewed since July 2002.

Melissa Frazier	Jim Teeter
Martha Monroe	Paula Warren
Vera Noyce	Kenneth Winer
Claudia Fernsworth	Sasha Bridges
Lila Walker	Reed Burkholder
Darrell Reinke	Lee Honsinger
Linda & Gary Mercer	Mary Ann Newcomer
Steven D. Benner	Leonard Nolt
Tracy Everson	Lora Rainey
Jyl Hoyt	Ruth Ann Smith
Cynthia Sandoval	Randa Tang
Mike Seehof	Alice M. Whitford
Patrick Sullivan	



Did you know?

Every NWEI dollar raised in Idaho is matched by NWEI Portland and helps support local efforts.

"Cost of Christmas" continued from page 2

response, I asked my students how they felt. Some suggested they felt ashamed that they were so concerned about how much they were getting when other people would never see a fraction of the gifts in their entire lives. Other students told me they felt lucky to live in a place where they were able to afford such frivolous items. But overall, the sentiment was of concern for the incredible difference in material and monetary wealth between themselves and their counterparts around the world. After that day, our sharing time was no longer dominated by Christmas talk. Instead, many students wanted to discuss ways that we might use our exorbitant resources to help others.

While I have no illusions that all the students ran out and gave their gifts and pocket cash to the

needy, I do know that I opened my students' eyes to a larger world. I know that many of them saw at least a short distance past their own wants to the needs of others, and others learned a greater appreciation of what they already have. For me, this represents one step in helping my students become conscious of and thoughtful about the world around them. ■

* For lesson plans contact Aaron Moiso 208-455-7603, drovis@hotmail.com

Glass Recycling: Melissa Jensen (age 13) and her mother, Neysa, will transport glass from North End to recycling center first Sat. of each month. \$5 donation for European School Trip fund. Call M. Jensen 345-2703.

Recorder Music: Recorder players in faux Renaissance costume will provide music for your party or event. \$25 donation to NWEI. Anne Hausrath 345-9631

Fire Show: Brighten winter parties/events with spectacular fireshow. Safe and amazing! Booking/information: Carrie 345-1943



TAKINGS & LEAVINGS

Let's Share! An NWEI swap meet. Do you have things you'd like to give away for free? Do you need something? We'd like to make this a regular feature in Turtle Times. To list things in our next edition: Contact Mary Smith: 368-0019 odatmary@cableone.net.

Here are a few listings - please contact the person directly.

Looking for:

- Computer table/hanging folders for NWEI: Tax deductible. Anne Hausrath 345-9631
- Cotton sheets, fitted full/double. Alice Whitford 343-9812
- manure for compost, any type: contact Alice Whitford 343-9812

Give away's:

- Wooden book shelf (37 1/2" h, 36" w, 8" deep): contact Anne Hausrath 345-9631
- Fabric scraps: Anne Hausrath 345-9631
- King comforter, sham, and bedskirt: contact Mary Smith 368-0019

Printed on 100% recycled paper.



Northwest Earth Institute • Boise

1810 West State St., PMB #209
Boise, ID 83702

Non-Profit Org.
US Postage

PAID

Boise, ID
Permit No. 397